

MeetingBar A10 Deployment & Connection

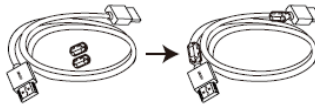
Package Contents

TIP

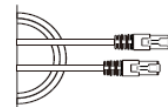
For the MeetingBar A10 unboxing video, please refer to [Video: MeetingBar A10 Unboxing](#).



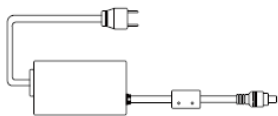
MeetingBar A10



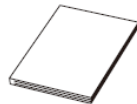
(1.8 m, 5.91 ft)
HDMI 2.0 Cable



(3 m, 9.84 ft)
CAT5e UTP
(RJ45 - RJ45) Cable



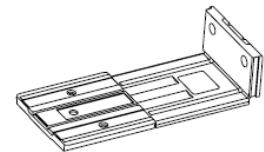
(3.5 m, 11.48 ft)
Power Adapter
(48 V/0.7 A)



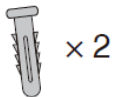
Quick Start Guide



(20 * 200 mm)
Cable Ties



Mounting Bracket



φ6 * 30 mm, white, Polyamide

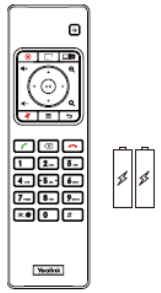

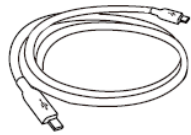

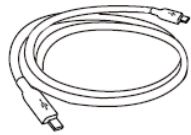


4*30 FAHOZN3+



1/4" -20 UNC

Optional Packages

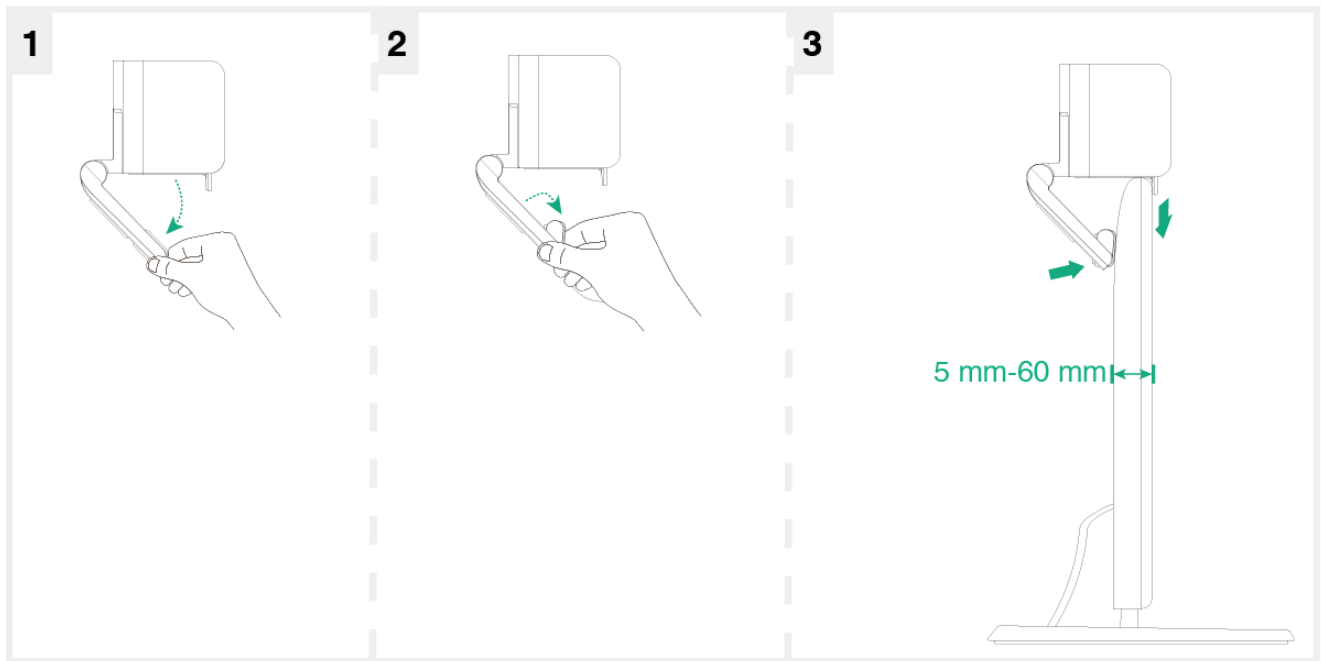
A	B	C
 VCR11 and AAA Battery × 2	 CTP18 Package	 USB 3.1 (C - C) Cable
 (1.8 m, 5.91 ft) USB 3.1 (C - C) Cable		 (3 m, 9.84 ft) USB 3.1 (C - C) Cable

Install MeetingBar A10

Put it on a desk



Mount it on a display

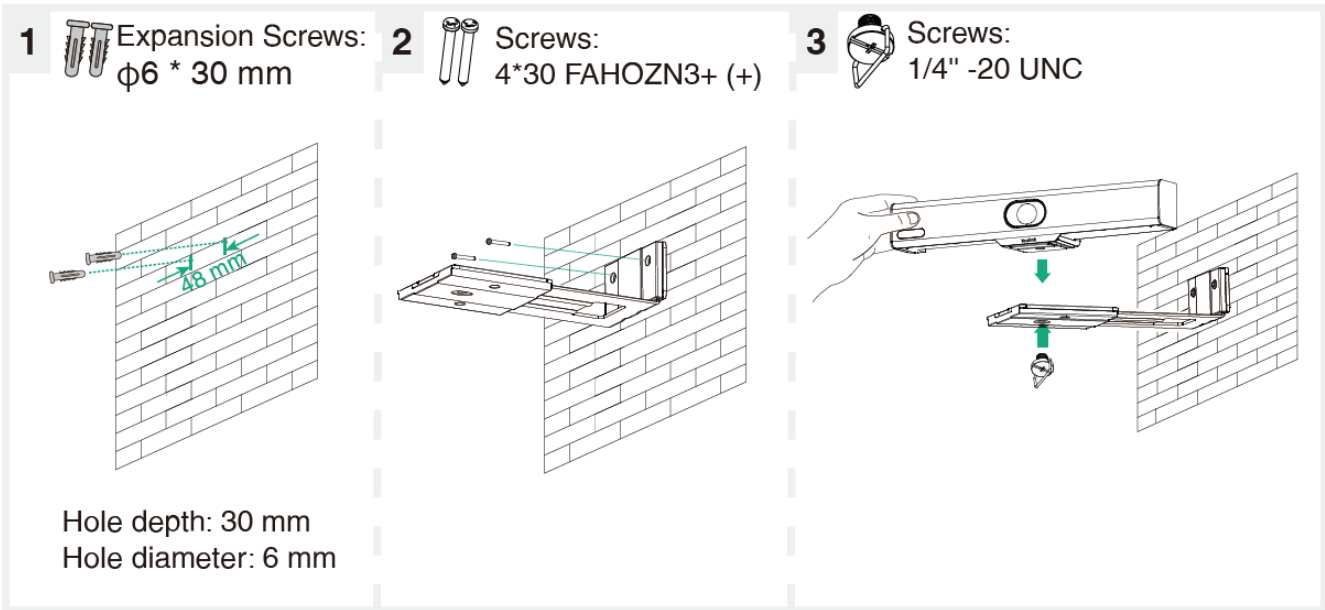


Mount it on a wall

NOTE

Embedded installation is prohibited (For example: inside the wall, enclosed space).



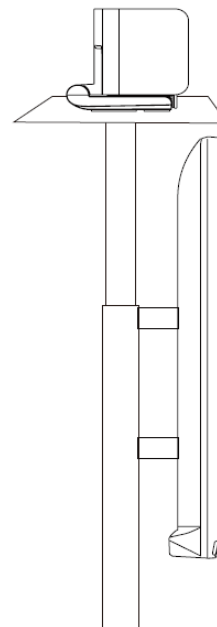
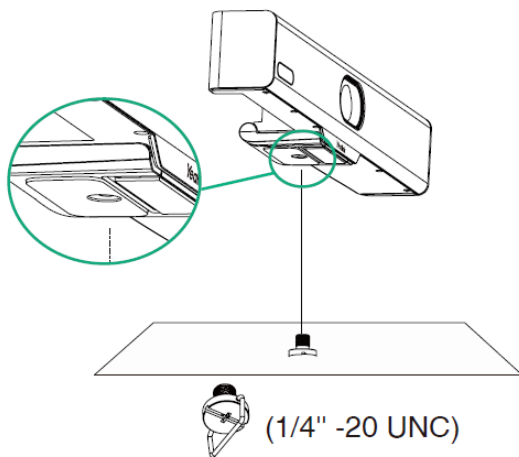


Mount to a TV stand or tripod

NOTE
The TV stand or a tripod should be able to bear the weight of at least 5 kg.

Sold separately:

- TV stand
- Tripod



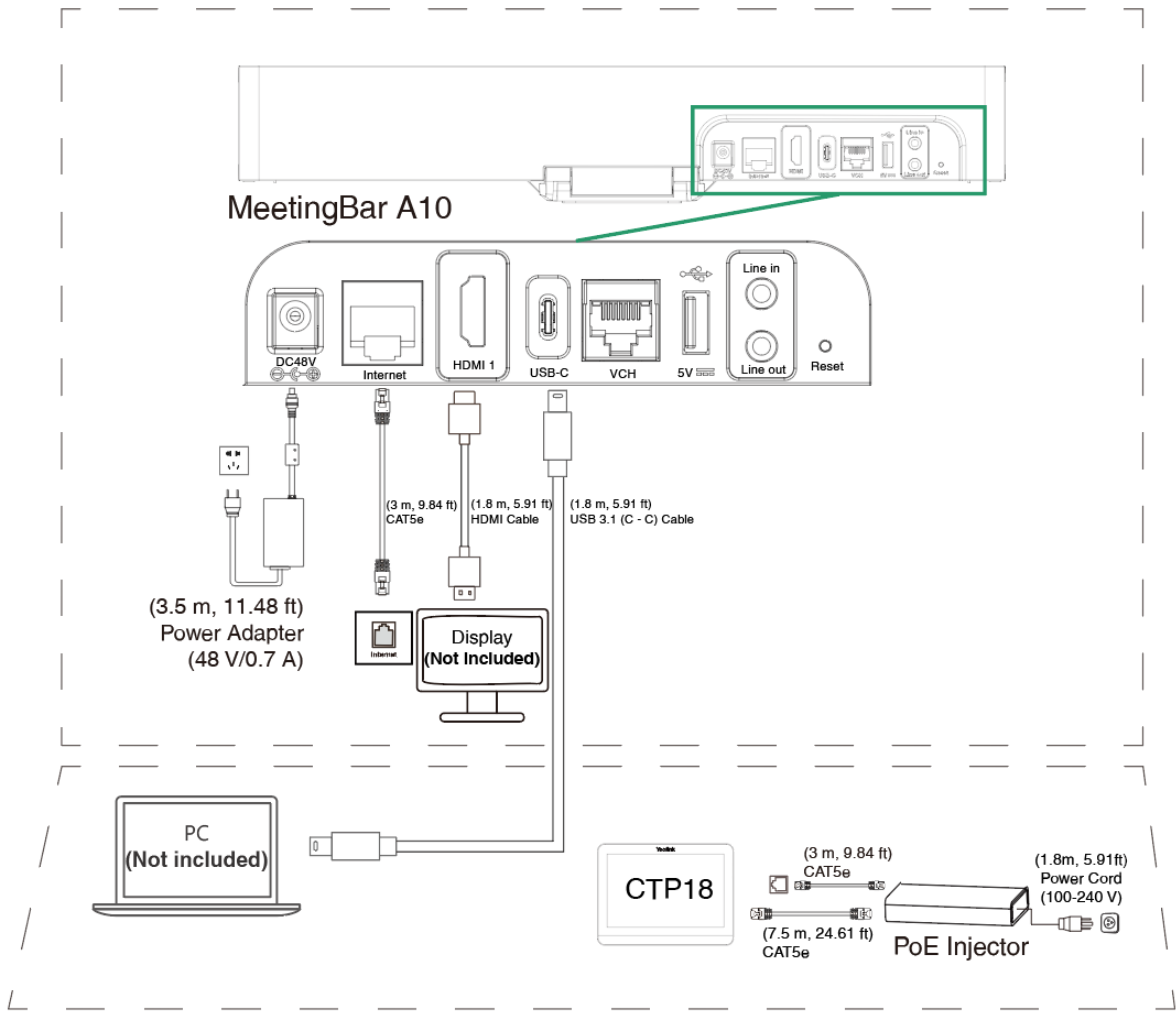
Connect/Pair MeetingBar A10

For a better pairing experience, we recommend starting the MeetingBar A10 first and then the CTP18. The MeetingBar A10 and CTP18 must be on the same LAN or connected to the same Wi-Fi before pairing and completing the setup.

You can power the CTP18 through PoE, as shown in the figure below.

After the deployment and connection are successful, please refer to [Quick Setup](#) to complete the setup wizard, and refer to [Quick Usage](#) to learn about getting started quickly.

NOTE
The functions of the VC hub/phone port and the Internet port are different, and please pay attention to the connection method when using it.



NOTE

- The MeetingBar A10 can use a USB-C cable for [Share Content](#).
- Not included accessories requirements:
 - Display: Resolution of 1080p or higher and with an HDMI port.
 - PC: Equipped with USB-C (support DP protocol) Port.

Supported Accessories

For more information, please refer to [Teams Room Accessories Compatibility Lists](#).

FAQ

Is the A10/A20/A30 unable to obtain the network, or is the network connection abnormal?

Does MeetingBar A10 support VCM34/VCM35/VCM38/VCM36-W/CPW90?

Not supported yet. You can follow the [Release Note](#) for the latest firmware version.

Can the MeetingBar A10/A20/A30 connect to 4G/5G routers?

Yes. You can connect the network port of the MeetingBar AX0 to the router's network port via a network cable.

How do I power off the MeetingBar A10/A20/A30/CTP18?

The MeetingBar A10/A20/A30/CTP18 does not have a power on/off button, and it can be powered off after unplugging the power adapter directly.